

pre-VISIT
ACTIVITY



GROSVENOR PARK
science
and nature
GUESS THE SUPER SHADOW
www.grosvenorparkchester.co.uk



LOTTERY FUNDED



GROSVENOR
PARK

Guess the Super Shadow

The world is full of shadows of all different shapes and sizes. At Chester Grosvenor Park there are plentiful shadows, including those made by the Grosvenor Park Lodge and by the big statue of Richard Grosvenor the Second Marquess of Westminster. There are also an abundance of shadows created by all the nature which can be found in the Park including the trees, flowers, birds and lots, lots more!



Mission – Super Shadow

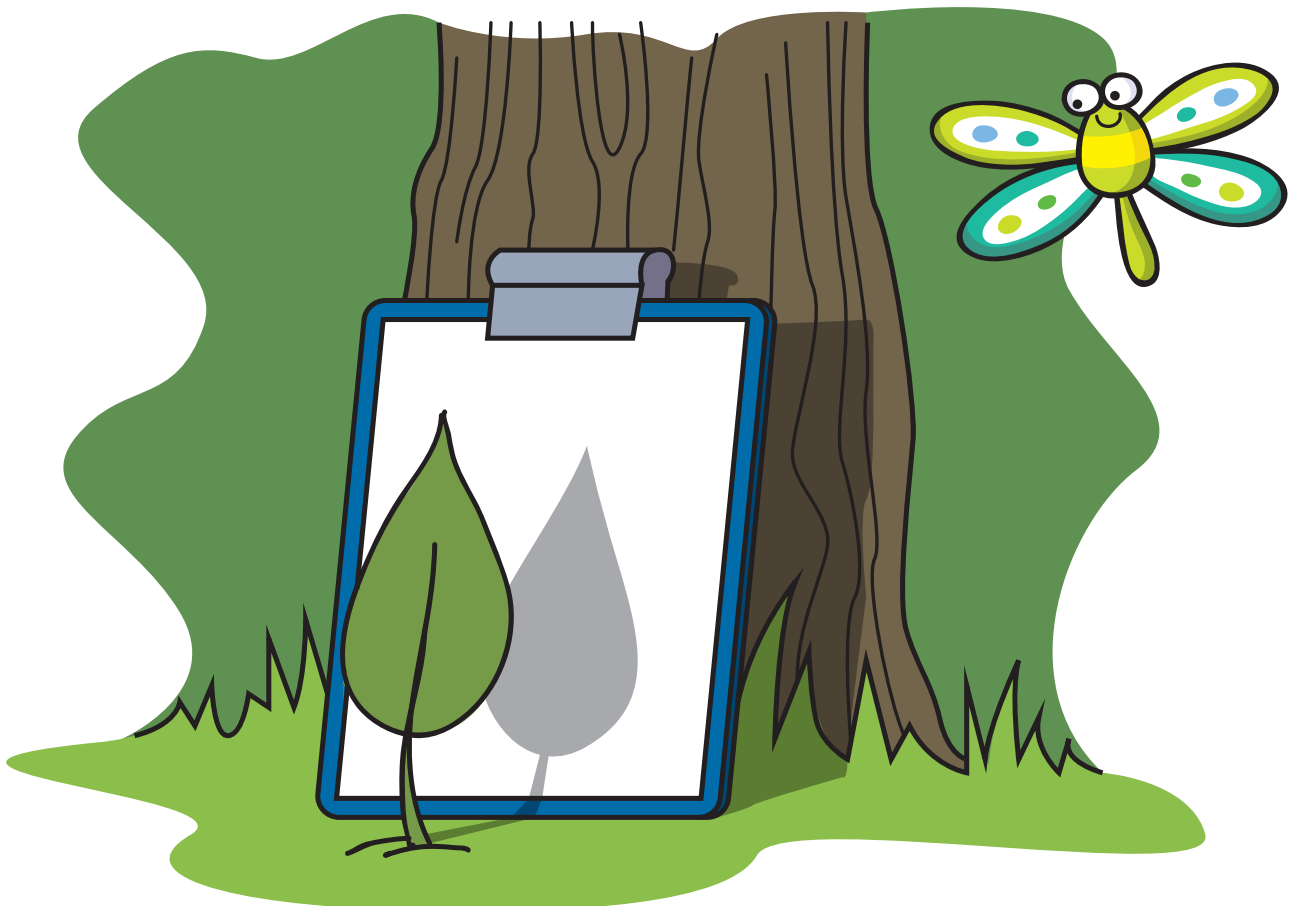
It is time to make your own super shadows! Scavenge for natural items and objects in your school garden, such as small fallen branches or fallen ferns. Long items will be great because they will make bigger shadows!

Look at your fabulous collection and choose an item to start your very own super shadows. Place your object in the ground in front of your clipboard and paper.

Now, mark out your shadow using your pencils. You could even try blending / shading too. Once you have completed your shadow, come back to it after a length of time.

- **Has your shadow moved?**
- **How far has it moved?**
- **Why do you think your shadow has moved?**

Why not try marking out your shadow in its new position!



Take a look at your friends' shadows.

- Can you guess what they are?
- Has their shadow moved too?
- What else can you see?



Things to think about

- Do your shadows stay in the same position or do they move?
- Do they stay the same size or get bigger or smaller?

Equipment and Resources

- Plain paper
- Pens
- Pencils
- Natural objects
- Clipboards
- Rulers
- The sun

Teachers notes

Encourage children to be kind to nature by looking for fallen items and objects.

Ensure your risk assessment is in place and carry out a check of the area.

Consider when to carry out this activity – shadows are much clearer on a sunny day.

If carrying out indoors, instead of placing the object into the ground, use a piece of blutac to place it in.

Also, use a lamp or torches to create the shadows.

Take time to explore the objects, their properties, textures, is it wet or dry? Does it snap easily or is it soggy? This will encourage the children to explore the world and learn about science.

If you wish to develop your own school grounds, here is a useful link!
www.growingschools.org.uk/resources

Curriculum links

Along with the other activities, this can be adapted to different key stages and is great for peer assessment.

- Describe simple properties of some materials.
- Knowledge and understanding of the world.
- Develop techniques of colour, pattern, texture, line, shape, form and space.
- Sources of light; shadows & reflections.
- Use sketchbooks to collect, record and evaluate ideas.
- Understand location and interaction of Sun, Earth & Moon.
- Light & Shadows.

Differentiation

This activity can be carried out in pairs / groups. It is very hands on and allows for deep investigation depending on each individual child.