

onsite
visit
activity



GROSVENOR PARK
ART and CRAFT
PHOTO VISION - PICK and FIX
www.grosvenorparkchester.co.uk



LOTTERY FUNDED



GROSVENOR
PARK

Photo Vision - Pick and Fix

Grosvenor Park has scenery rich in colour, shape, layers, shades, nature... it would be lovely to capture elements of this using our own creativity.

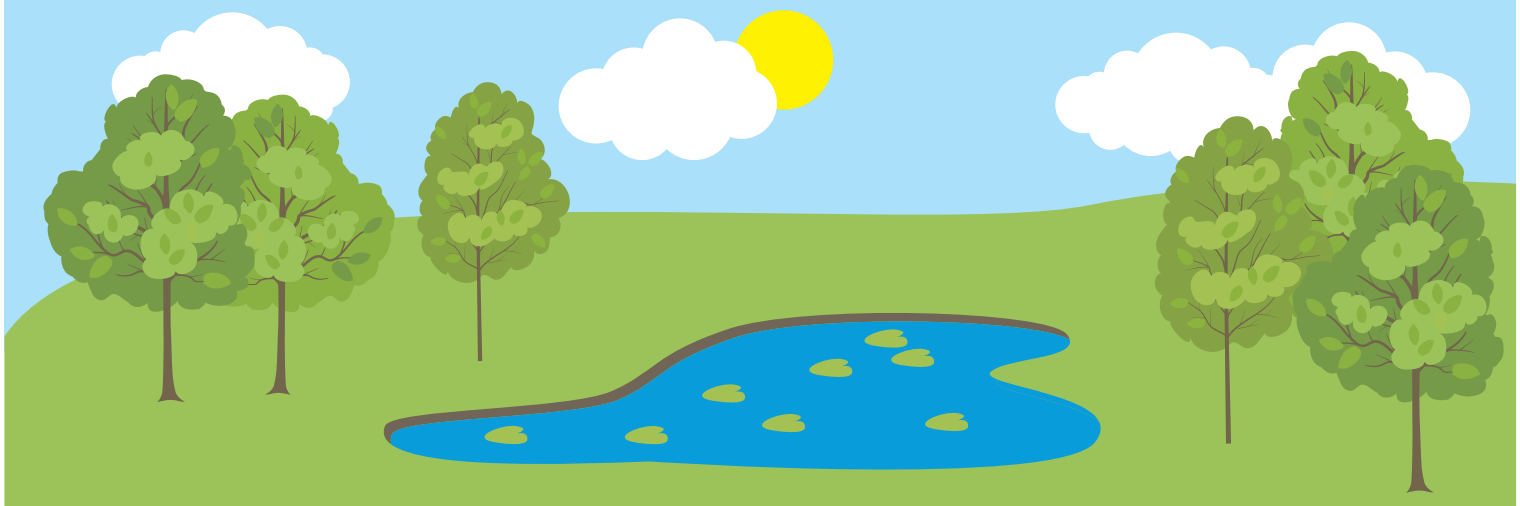
Mission – Photo Vision Pick and Fix

- Use your vision to look around the Park.
- Pick a section that has caught your eye.
- Fix your photo template in place by holding your arm out straight, then draw or sketch what you see into the photo frame on the worksheet to fix the scenery into place.

Things to think about

Try this: hold your frame out up high, down low or in between to provide you with a choice of areas to choose from, for example, the sky, trees, flower beds, buildings, the pond, the statue of the Second Marquess of Westminster who was called Richard Grosvenor and more.

When you have chosen your area through the picture frame, remember what is in one of the corners and where you are standing. This will help you to find your area again if you need to.



Teachers notes

The photo template frames could be pre-cut at school/ in your setting by the children , ready for the onsite activity. Children could work alongside peers to inspire each other.

Websites may be useful to provide inspiration by viewing examples of existing art pieces.

www.bbc.co.uk/education/clips/zgrkq6f

Equipment and resources

- Pencils
- Photo templates
- Worksheets
- Erasers
- Clipboard to lean on
- A range of mediums such as; charcoal/ sketching pencils/ watercolours/ chalk pastels/ oil pastels and so on.

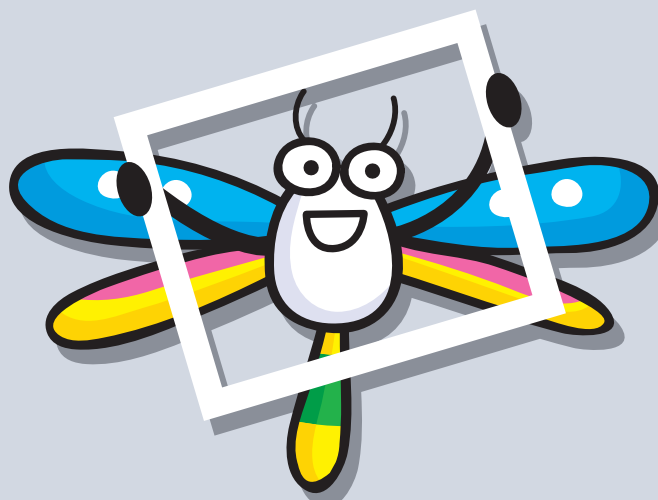
Curriculum links

- Develop techniques of colour, pattern, texture, line, shape, form and space.
- Good control and coordination in large and small movements.
- Knowledge and understanding of the world.
- Creative Art.

Differentiation

- The art mediums provided for the children can vary and link to your planning/ children's abilities, provide challenge and progression opportunity and so on.
- Children could be placed in small, mixed ability groups to assist with peer progression.

Worksheet – Photo Vision Pick and Fix



Carefully cut
this shape out

Now that you have used your vision to pick what you will draw, fix your drawing in this frame template. Well Done!